

尺寸: 210*100mm

Manual Instruction

AC Triac Dimmer(Zigbee 3.0+2.4g+PUSH) Model No.: TR01Z

1. Product feature

- Support Zigbee 3.0 standard protocol, Compatible with various ZigBee 3.0 gateways, Such as Amazon Alexa- SmartThings- Tuya- Philips Hue, etc.
- Support 2.4G RF Remote control
- Support Smartphone App control (need Zigbee 3.0 gateway)
- Connect PUSH Dimmer switch, support ON/OFF and continuous dimming function.
- 0~100% brightness smoothly, flicker free.
- Adopt back edge phase dimming.
- Set the lowest brightness by key.
- Temperature detecting switch, with overheat protection and automatic recover function.
- Overload protection, automatic power limit function.
- Signal Auto-Transmitting and mode auto-synchronization function.
- Can be installed in a standard 86*86 wall junction box.
- V0 class anti-fire case.

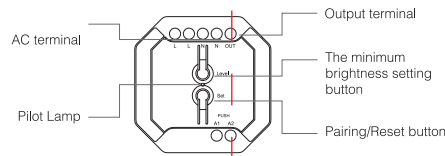
2. Technical Specification

Input Voltage: AC 100V ~240V 50/60Hz
Output Voltage: AC 100V ~240V 50/60Hz
Output current: Max 1.4A
Max output power: 154W@110V 308W@220V
Working temperature: Ta: -20°C~40°C
Control distance: 30m(Open and barrier-free)
Size: 49*49*24mm(Length*width*height)

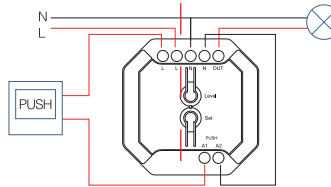
2.1 Supported Loading type

Loading type	Max output power
Dimmable LED light	100W@110V 200W@220V
Triac Dimming LED Power Supply	100W@110V 200W@220V
Incandescent lamps and high voltage halogen lamps	154W@110V 308W@220V

3. Product Structure



4. Wiring Diagram



⚠ Notes: Before powering on device ensure all wires connection are correct. Otherwise the product will be damaged.

5. Product Function

5.1 Function of the key

Function	Operation unit	Operation instruction
Enter Linking status	"SET"	Short press "SET" once, when the pilot lamp blink, enter linking mode
Reset network and restore the factory defaults.	"SET"	Long press "SET" for 3 seconds, when the pilot lamp blinks slowly, the network is reset successfully and restore to factory defaults
The Minimum brightness set	"Level"	Short press the "Level" when pilot lamp blinks quickly, switches different minimum brightness circularly.

5.2 Enter Linking status:

Any of the following 3 methods can make the device enter linking mode:
(1) Power off the controlled dimmer for 10s and then power on again. The dimmer enter linking mode
(2) Press the "PUSH" switch, continuously press the PUSH switch for four times or more within 5 seconds, the device enter linking mode.
(3) Short press the "SET" once, the device enter linking mode.
Note: The linking mode just can be kept in 5 seconds, after 5 seconds, please above steps.

5.3 When the device is on linking mode, use the remote control to link or unlink.

Link: Short press Zone "ON" for 3 times within 5s
Unlink: Short press Zone "ON" for 5 times within 5s

5.4 PUSH Dimmer dimming function:

(1) Short press PUSH Dimmer: Turn on or Turn off the light

(2) Long press PUSH switch:

Dim the brightness smoothly

Long press Push Dimmer, then loosen the Push Dimmer, then long press again, switch increase brightness or decrease brightness.

5.5 Reset network

Any of the following 3 methods can reset the device network

(1) Power ON and OFF for over 4 times (ON-OFF-ON-OFF-ON-OFF-ON), when the pilot lamp blink 3 times, the device reset successfully. (Only reset network, not unlink code)

(2) Under the light OFF status, long press PUSH Dimmer switch for over 15s (Notes: need to connect to Push Dimmer switch first), when the pilot lamp blink 3 times, the device reset successfully.

(3) Power OFF the triac dimmer, long press and hold the linked remote Zone ON button, do not release it, then power ON the device again, when the pilot lamp blink 3 times, the device reset successfully.

5.6 Minimum brightness setting

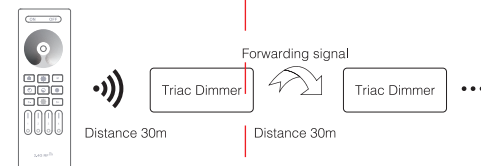
(1) Press the "Level" once, the pilot lamp will blink quickly, the light immediately outputs the current minimum brightness. Repeatedly pressing the "Level" switch the minimum brightness circularly. There are 7 minimum brightness levels: 5%、10%、15%、20%、25%、30%、35%.

(2) Stop press the "Level". After 10 seconds, exit the minimum brightness setting and restore the luminous state before operation.

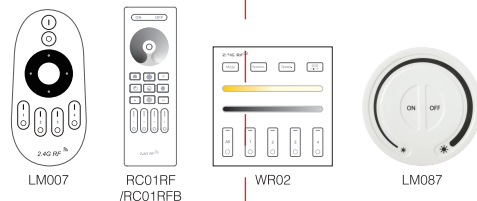
(3) Long press "Level" button until the pilot lamp blink. The minimum brightness restore to default setting.

6. Signal Auto-transmitting instruction

The dimmer can forward the received remote control signal to another dimmer within 30m, as long as there is a dimmer per 30m, the control distance can be unlimited.



7. Compatible remote control (purchase separately)



8. Malfunction analysis and elimination

Malfunction	Reason	Solution
the light isn't working	No power or wrong wiring	Check the power supply and wiring
When the light is adjusted to the highest brightness, it will automatically dim	When the loading current exceeds the dimmer maximum loading, the dimmer automatically limits the output current	Reduce the loading power
During operation, the light is automatically turned off and automatically restored after a period of time.	Dimmer overheat protection	Reduce the loading power

9. Zigbee 3.0 APP Control Instruction

9.1 Download and install [Tuya Smart] APP or [Smart Life] APP

Search for [Smart Life] in Apple or Google store or scan following QR code to download and install the app.

Please click "Register" button to create account while using it in the first time, Log in directly if you already had account.



9.2 Connect to Smartphone

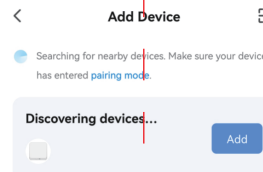
You must link the Tuya Zigbee 3.0 Gateway first to the smartphone, then add the zigbee controller to zigbee gateway for smartphone control.

(1). How to connect zigbee gateway to smartphone. (Note: All Tuya Zigbee 3.0 gateway in market can works on our Zigbee controller; Here we use our wireless Zigbee 3.0 gateway for example).

First. Power the zigbee gateway, and long press the "SET" button until the red indicating lamp blinking.

Second. when the red indicating lamp blink, open the Smart Life APP, and press "Add Device".

It will discover the new device automatically, then Press "Add" to complete the linking.



(2). Add the triac dimmer to linked Zigbee gateway.

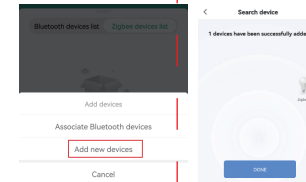
First. make the dimmer enter smart link mode. Any of the following 3 methods can reset the device network.

1. Power ON and OFF for over 4 times (ON-OFF-ON-OFF-ON-OFF-ON), when the pilot lamp blink 3 times, the device is in smart link mode. (Only reset network, not unlink code).

2. Under the light OFF status, long press PUSH Dimmer switch for over 15s (Notes: need to connect to Push Dimmer switch first), when the pilot lamp blink 3 times, the device is in smart link mode.

3. Power OFF the triac dimmer, long press and hold the linked remote Zone ON button, do not release it, then power ON the device again, when the pilot lamp blink 3 times, the device is in smart link mode.

Second. Press "Add new devices" on the APP, it will automatically find the zigbee device, then complete the linking. Added device will be displayed on the homepage after added successfully, then Click device you want to control to enter the control interface.



10. Attention

1. When installing the device, please switch off the power to ensure safety.
2. The product can not be installed to the area near flammable and explosive materials.
3. Please check whether the input voltage is consistent with the device.
4. Non-professional users should not disassemble the equipment directly, otherwise it may cause electric shock or damage the equipment.
5. Do not use the device in the vicinity of a large metal area or strong electromagnetic waves, otherwise the remote control distance will be seriously affected.



Made in China