

# Manual Instruction

SKU:6232

## Zigbee 3.0 5-in-LED Strip Controller

Model No.: LM052

### 2. Parameters

Model No.: LM052  
 Input Voltage: DC12V-24V (5.5\*2.1mm)   
 Output: 6A/Channel (Total Output Max. 15A)  
 Working Temperature: -20~60°C  
 RF: 2.4GHz  
 Weight: 65g



Smart Link&Unlink: We have 3 methods to Link and Unlink to APP.  
 1. Long press "SET" 3 seconds, the purple will blink 3 times, the device go into Smart Link/Unlink mode.  
 2. Use Linked 091 remote, long press the linked Zone ON button for 3 seconds, the purple light will blink 3 time, the device go into Smart Link and Unlink Mode.  
 3. Switch ON and OFF 3 times(ON-OFF-ON-OFF-ON) within 10 seconds, the purple light will blink 3 time, the device go into Smart Link and Unlink Mode.

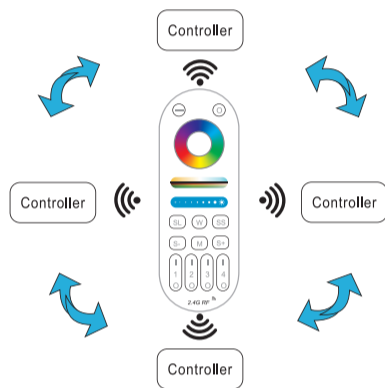
Switching Output Mode: Short press "SET" button to switch the output mode; The indicating lamp flickering means switching successfully; Different colors ON correspond to different output mode; Details see below sheet.

White Light ON	Yellow Light ON	Red Light ON	Green Light ON	Blue Light ON
Single Color Mode	Dual White Mode	RGB Mode	RGBW Mode	RGB+CCT Mode (Default Mode)

**Suggestion:** Complete the network distribution of the equipment first, then adjust the output mode Pilot lamp.

### 3. Auto-synchronization function

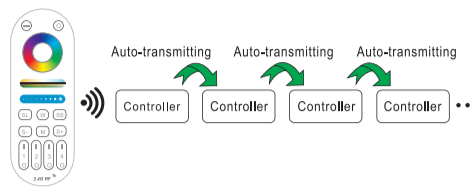
Different controllers can work synchronously when they are started at different times, controlled by the same remote, under same dynamic mode and with same speed.



**Remark:**  
 1. Indicating Auto-transmitting.  
 2. Controller will be auto-synchronizing in the same dynamic modes and within 30m controlling distance.

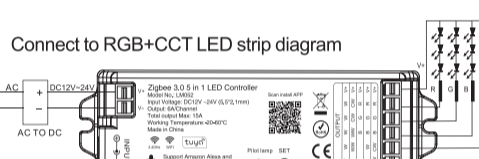
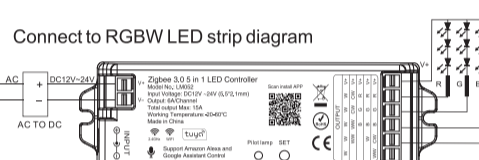
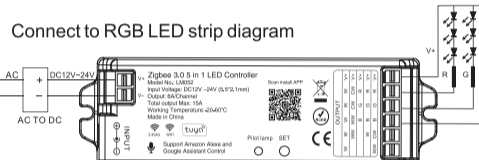
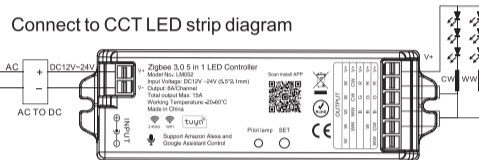
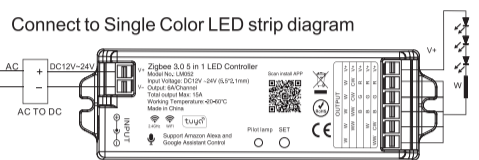
### 4. Auto-transmitting Diagram

One strip controller can transmit the signals from the remote control to another controller within 30m, as long as there is a strip controller within 30m, the remote control distance can be limitless.



### 5. Connect to LED strip

Controller input voltage must be in accordance with the required voltage of LED Strips.  
**Input voltage=Output Voltage**



### 6. Remote Controller

Compatible with these remote controls (Purchased separately). For more details, pls read the remote instruction.

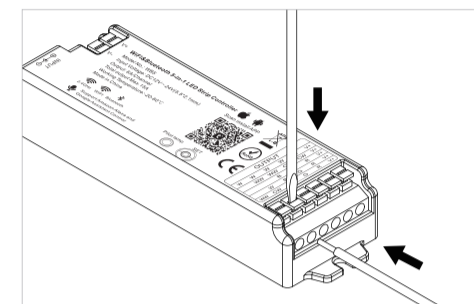


SKU:6014

SKU:6013

SKU:6016

### 7. Free screw when connecting to LED strip



≥0.39 in / 10mm



Made in China

Please read the instructions carefully before using the controller.

### 1. Features

- 16 Millions of colors to choose
- Color temperature 2700K-6500K
- Dim brightness / saturation
- Support music rhythm
- Tap-to-Run & automation
- Free screw when connecting to LED strip
- Link/Unlink/Reset Button on the controller
- Auto-transmitting & Synchronization
- WiFi wireless control
- Smartphone APP control
- Support third party voice control
- Support remote control (control distance 30m)
- Device sharing
- Group control
- 2.4G wireless transmission technology

## Zigbee 3.0 APP Control Instruction

### 1. Download and install [Tuya Smart] APP or [Smart Life] APP

Search for [Smart Life] in Apple or Google store or scan following QR code to download and install the app.

Please click "Register" button to create account while using it in the first time, Log in directly if you already had account.



### 2. Connect to Smartphone

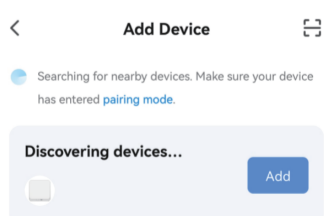
You must link the Tuya Zigbee 3.0 Gateway first to the smartphone, then add the zigbee controller to zigbee gateway for smartphone control.

(1). How to connect zigbee gateway to smartphone. (Note: All Tuya Zigbee 3.0 gateway in market can works on our Zigbee controller; Here we use our Zigbee 3.0 gateway for example).

First, Power the zigbee gateway, and long press the "SET" button until the red indicating lamp blinking.



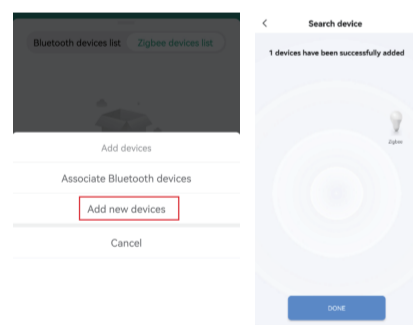
Second, when the red indicating lamp blink, open the Smart Life APP and press "Add Device". It will discover the new device automatically, then Press "Add" to complete the linking.



(2). Add the Zigbee controller to the linked zigbee gateway.

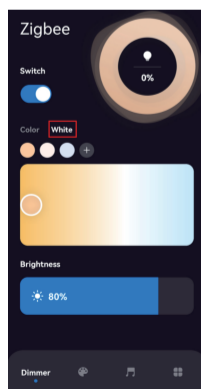
First, Power the controller, long press on "SET" button on the controller or switch the power 3 times(ON-OFF-ON-OFF-ON), when the purple pilot lamp blink 3 time means the controller come into smart link mode. (SKU:6014) After on the smart link mode, please finish the linking within 3 minutes, after 3 minutes, after 3 minutes, the controller will stop smart link mode, you need to do the above steps again).

Second, Press "Add new devices" on the APP, it will automatically find the zigbee device, then complete the linking. Added device will be displayed on the homepage after added successfully, then Click device you want to control to enter the control interface.

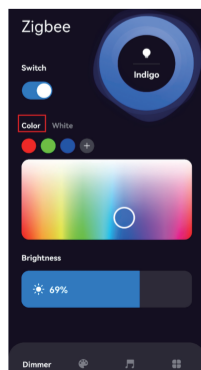


### 3. APP Control

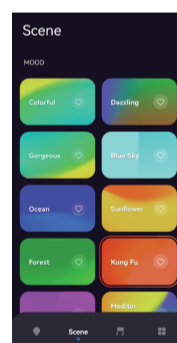
(1). When you come into control page, Click [dimmer] on the bottom left corner, then click [white], you can control the white light with color temperature, brightness, and save the white light you like.



Click [Color], you can control color change, brightness, saturation and save colors you like.

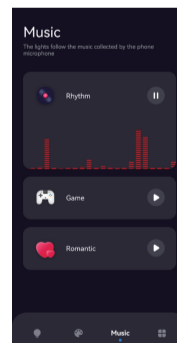


(2). Click [Scene] on the bottom, you can get into Scene control page.

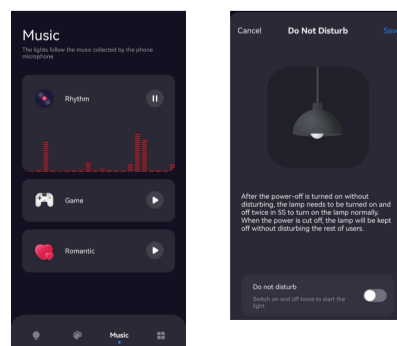


Modes	Single Color Output	Dual White Output	RGB Output	RGBW Output	RGB+CCT Output
Color Change	x	x	√	√	√
CCT Adjust	x	√	√	x	√
Brightness Dimming	√	√	√	√	√

(3). Click [Music], you can come into Music rhythm control page.



(4). Click [More] to come into More function including Schedule and Do Not Disturb. Do not disturb function, pls read below pics carefully.

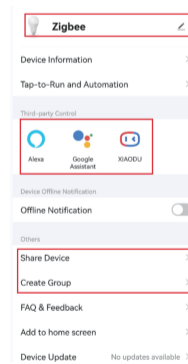


(5). Device name editing, Third-party Control, Device Sharing and Group Control.

(5.1) Click [More] on the top right corner of control page to come into extra function.  
 (5.2). Click icon under third-party control to view detailed description of third-party control  
 (5.3). Click [Share Device] to share the device to family and friends.

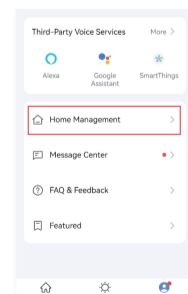
**Note:** to share device, you need to create a home first, then add members in to this home. Please read 6th instructions for how to make home management.

(5.4). Click "Create Group" and follow APP prompt after setting is completed, the devices can be controlled by group.

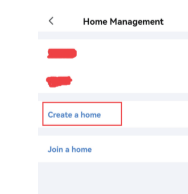


(5). How to make Home Management for Device Sharing.

(6.1) Click [Home Management] on the home page control interface, then click [Home Management] to enter Home Management making.



(6.2) Click [Create a home] to complete home management, then you can add members on the home, and share device to your home number.



**Note:** Our Zigbee 3.0 controller also works on Philips Hue Bridge and Samsung Smartthings gateway for smartphone controlling.