

Manual Instruction

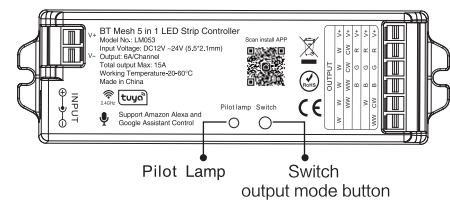
SKU:6231

Bluetooth Mesh 5 in 1 LED Controller

Model No.: LM053

Introduction

Bluetooth Mesh 5 in 1 (Single Color&CCT&RGB&RGBW&RGB+CCT) LED Controller is our newly developed high-ed controller, controlled by Tuya Smart Life APP directly, also 3G+G long distance control and support third party voice control (need Tuya Bluetooth Mesh Gateway). The controller has auto-transmitting and auto-synchronizing function and with brightness, CCT, RGB, RGBW, RGB+CCT output mode. This controller adopt the widely used 2.4GHz wireless technology with the features of low power consumption, long signal transmitting and strong anti-interference, etc. One compatible remote control many controllers at the same time, compatible remote control many controller at the same time. Widely used on the controlling of hotel lighting and home lighting.



Smart Link&Unlink: We have 3 methods to Link and Unlink to APP.
 1. Long press "SET" 3 seconds, the purple will blink 3 times, the device go into Smart Link/Unlink mode.
 2. Use Linked 091 remote, long press the linked Zone ON button for 3 seconds, the purple light will blink 3 times, the device go into Smart Link and Unlink Mode.
 3. Switch ON and OFF 3 times(ON-OFF-ON-OFF-ON) within 10 seconds, the purple light will blink 3 times, the device go into Smart Link and Unlink Mode.

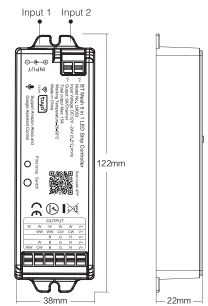
Note: Pilot lamp red light always ON means device not link to APP, need to do above steps to link. green light always ON means device linked to APP, device is controllable.

Bluetooth control will be available after linking by APP.
 Switching Output Mode: Short press "SET" button to switch the output mode; The pilot lamp flickering means switching successfully; Different colors flickering correspond to different output mode; Details see below sheet.

White Light Flickering	Yellow Light Flickering	Red Light Flickering	Green Light Flickering	Blue Light Flickering
Single Color Mode	Dual White Mode	RGB Mode	RGBW Mode	RGB+CCT Mode (Default Mode)

Technical Data

Model No.: LM053
 Working Temperature: -20~60°C
 Input Voltage: DC12V~24V
 Output: 6A/Channel
 Total Output Max: 15A
 Connection: Common anode
 RF: 2.4GHz
 Control Distance: 30m
 Size: 122*38*22mm
 Weight: 60g

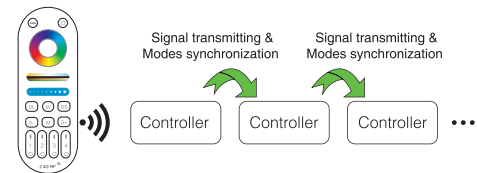


Signal transmitting

One strip controller can transmit the signals from the remote control to another controller within 30m, as long as there is a strip controller within 30m, the remote control distance can be limitless.

Mode synchronization

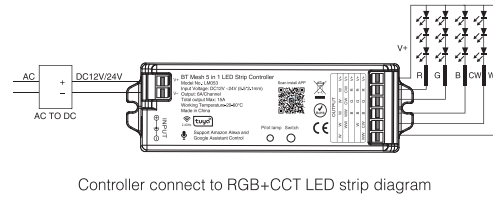
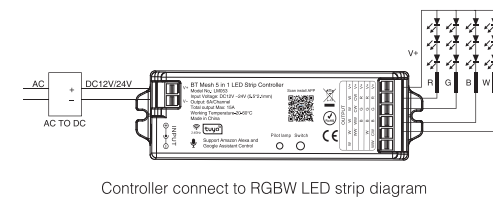
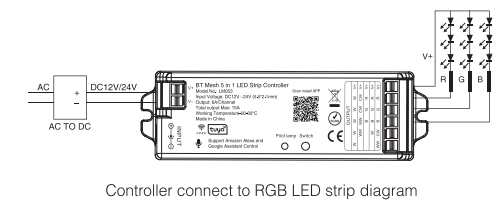
Different controllers can work synchronously when they are started at different times, controlled by the same remote, under same dynamic mode and with same speed.



Remote Dynamic Mode Sheet

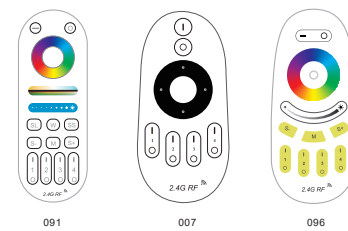
No.	Dynamic Mode	Single Color Mode	Dual White Mode	RGB&RGBW&RGB+CCT Mode	Brightness / Saturation / Speed	Auto-Sync
1	Plotous Profusion	x	x	√	Adjustable	Under same remote, same zone, same speed and dynamic mode, lights can be auto-sync
2	Blue Sky	x	x	√		
3	Gorgeous Color	x	x	√		
4	Ocean	x	x	√		
5	Dreamlike	x	x	√		
6	Christmas	x	x	√		
7	Forest	x	x	√		
8	Birthday	x	x	√		
9	Blooming	x	x	√		
10	Single white jump to change	√	√	x		
11	Single white jump to change-gradual change	√	√	x		
12	Single white gradual change	√	√	x		

Connect to LED strip



Remote Controller

Compatible with these remote controls (Purchased separately). For more details, pls read the remote instruction.



⚠ Lighting can be working after linking with remote; for more details, pls read the remote instruction.

Bluetooth Mesh APP Control Instruction

1. Download and install [Tuya Smart] APP or [Smart Life] APP

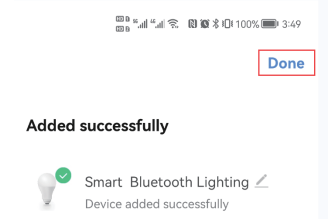
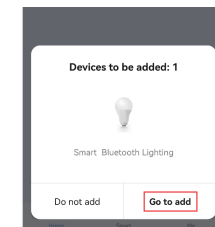
Search for [Smart Life] in Apple or Google store or scan following QR code to download and install the app.

Please click "Register" button to create account while using it in the first time, Log in directly if you already had account.



2. Connect to Smartphone

- Set up Bluetooth function on your smartphone.
- Power the controller, when the light ON, Long press SET Button, when the pink light blink, the light come into smart link mode.
- Open the log-in Smart Life APP, it will auto find the device.

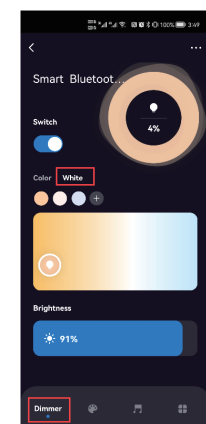


- Added device will be displayed on the homepage after added successfully, then Click device you want to control to enter the control interface.

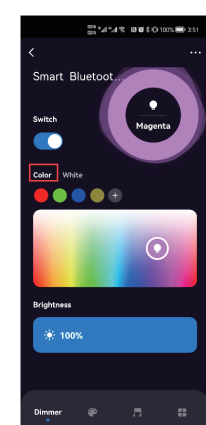


3. APP Control

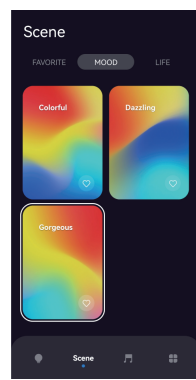
- When you come into control page, Click [dimmer] on the bottom left corner, then click [white], you can control the white light with color temperature, brightness, and save the white light you like.



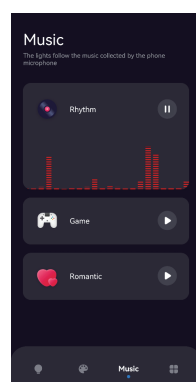
- Click [Color], you can control color change, brightness, saturation and save colors you like.



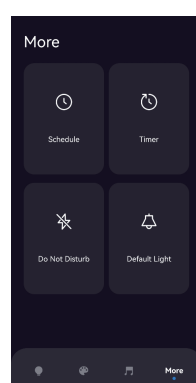
- Click [Scene] on the bottom, you can get into Scene control page.



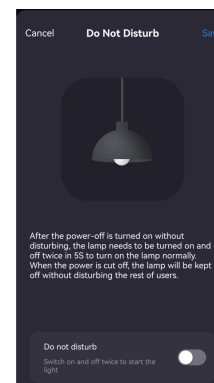
- Click [Music], you can come into Music rhythm control page.



- Click [More] to come into More function including Schedule, Timer, Do Not Disturb and Default Light.



Note: To set up Timer function, you need to link Bluetooth Mesh Gateway.
 • Do not disturb function, pls read below pics carefully.

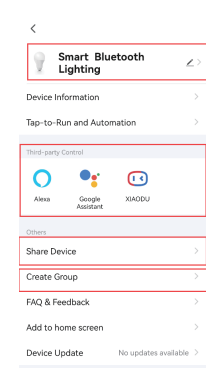


4. Device name editing, Third-party Control, Device Sharing and Group Control.

- Click [More] on the top right corner of control page to come into extra function.
- Click icon under third-party control to view detailed description of third-party control (need Bluetooth Mesh Gateway).
- Click [Share Device] to share the device to family and friends (need Bluetooth Mesh gateway).

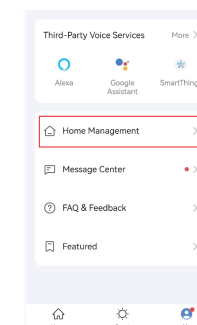
Note: to share device, you need to create a home first, then add members in to this home. Please read 6th instructions for how to make home management.

- Click "Create Group" and follow APP prompt after setting is completed, the devices can be controlled by group.

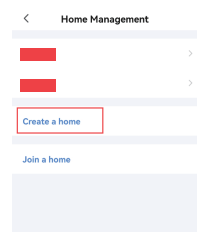


5. How to make Home Management for Device Sharing.

- Click [Home Management] on the home page control interface, then click [Home Management] to enter Home management making.



- Click [Create a home] to complete home management, then you can add members on the home, and share device to your home number.



Note: Bluetooth Gateway connection, please read the manual instruction after you buy the bluetooth gateway.

Attention

- Please check whether the input voltage of the constant voltage power supply is in accordance with the controller, and please check the connection of both the cathode and anode, otherwise the controller will be broken.
- Please don't connect wires with power on. Please turn on again only when it is in right connection and no short circuit.
- Please do not use the controller in the place with widely range metal area or strong electromagnetic wave nearby, otherwise, the remote distance will be seriously affected.
- When the device load to 15A, wire diameter must be over 1.5mm²

